

LOCATIONS AND HOURS OF OPERATION

HEAD QUARTERS 306 N. 5th
St. Marys, KS 66536
(785) 437-2778
illpowab@oct.net
cremerj@oct.net

M,T,F 8:30-5:00
Wednesday 8:30-6:00
Thursday 8:30-7:00
Saturday 9:00-1:00



BRANCHES: Alma Branch Library
115 West 3rd, PO Box 420
Alma, Kansas 66401
(785) 765-3647
powabalm@embarqmail.com

M,T,F, 9:00-12:15
12:45-5:00
Wednesday 9:00-12:15
12:45-7:00



Eskridge Branch Library
115 S. Main, PO Box 87
Eskridge, KS 66423
(785) 449-2296
powabesk@embarqmail.com

M,T,W,F 9:00-12:30
1:00-5:00
Saturday 9:30-12:00



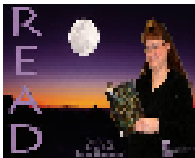
Onaga Branch Library
313 Leonard, PO Box 310
Onaga, KS 66521
(785) 889-4531
powabona@bluevalley.net

Monday 9:00-12:30
1:00-7:00
T,W,F 9:00-12:30
1:00-5:00
Saturday 9:00-10:30

MINI LIBRARIES:

This is a physical Address - Mail is not received at Mini locations.
All correspondence, both physical and electronic, should be addressed to the Headquarters Library at St. Marys.

Alta Vista Mini Library
310 Center, Alta Vista
(785) 499-5542
powabav@tctelco.net
Wednesday 10:00-11:30
12:00- 6:30



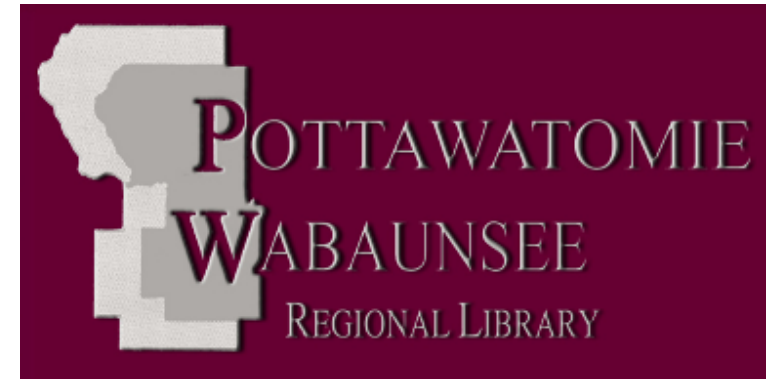
Harveyville Mini Library
128 West Oak, Harveyville
(785) 589-2414
powabhv@embarqmail.com
Wednesday 12:30-5:30
Saturday 9:30-12:00

Olsburg Mini Library
318 N. 2nd, Olsburg
(785) 468-3347
powabols@twinvalley.net
Thursday 10:00-12:00
12:30- 3:30
Saturday 9:00-11:00



Westmoreland Mini Library
315 Main, Westmoreland
(785) 457-2841
powabwst@bluevalley.net
Monday 10:00-1:00
1:30-6:00

2008 ANNUAL REPORT



LIBRARY WEBSITE

HTTP://WWW.POTTWAB.ORG

POTTAWATOMIE WABAUNSEE REGIONAL LIBRARY

The Pottawatomie-Wabaunsee Regional Library began as an 18 month demonstration project conducted by the State Library of Kansas. The project ended on November 6, 1962, with the voters of Pottawatomie and Wabaunsee Counties approving the establishment of the Regional Library by a 2 to 1 margin. The Pottawatomie Wabaunsee Regional Library is today the only two-county public library in Kansas.

The St. Marys Branch Library became the headquarters for the Regional Library, and the Onaga Library was established as a Branch in 1962. The Alma Branch Library was added in 1963, and the Eskridge Branch was added in 1967.

PWRL originally operated a bookmobile that stopped at many of the rural communities in both counties. Due to the cost of the service, and a reduction in use, the Bookmobile ceased operation in 1995. The Board determined at that time that a new means to provide Library service to the rural areas was needed. As a result, three Mini Libraries were established as service outlets in Harveyville, Olsburg, and Westmoreland in 1981. A fourth Mini Library was opened at Alta Vista in 1996.

Mini Libraries are access points for Library service. Their purpose is to provide residents in more remote areas of the two counties with direct, but limited, Library service. Materials at Mini locations are continually rotated from PWRL's shared collection of more than 100,000 items, and a fresh and balanced selection is maintained at each location.

Today PWRL strives to provide free and open access to information and deliver the best possible Library Services to the residents of Pottawatomie and Wabaunsee Counties. The Library serves a population of 21,819 residents in Pottawatomie and Wabaunsee counties, has a legal service area of 1,612 square miles, and maintains libraries in the rural communities of Alma, Alta Vista, Eskridge, Harveyville, Olsburg, Onaga, St. Marys and Westmoreland.

CHARACTERISTICS OF LEGAL SERVICE AREA

The Pottawatomie Wabaunsee Regional Library is established under K.S.A. 12-1231 et seq. The Library is supported by a mill levy on the two counties, excluding Wamego and the part of Manhattan in Pottawatomie County. The division of the budget between the two counties is based on population and valuation in each county, per K.S.A. 12-1234(b)

Legal Service Area

Pottawatomie County	820 square miles
Wabaunsee County	792 square miles

2008 Legal Service Population – From the KS Office of the Dir. of the Budget

Pottawatomie County	
(Within Library District)	15,090
Wabaunsee County	<u>6,870</u>
Total in PWRL Service Area	<u>21,960</u>

2008 Tangible Valuation - From County Clerk

Pottawatomie County	318,878,158
(Within Library District)	
Wabaunsee County	<u>67,378,494</u>
Total valuation in PWRL Service Area	<u>386,256,652</u>

SERVICES AVAILABLE

BOOKS

Adult and children's books are available at all locations in regular & large print.

AUDIO BOOKS

Books on cassette, both fiction and non-fiction, are available at all locations.

MAGAZINES AND NEWSPAPERS

Approximately 150 different titles are received.

VIDEOS

The library has a small collection of educational videos available for check-out.

REFERENCE.

A qualified staff is ready to help. If the answer to a reference question is not readily available Library staff will assist patron's with research and refer them to expert resources to find an answer.

INTERLIBRARY LOAN

PWRL can borrow library materials from other libraries through a statewide borrowing network to satisfy patron's needs for items or information that is not owned by PWRL.

STORY TIME

A story time for toddlers and pre-schoolers is held at Branch locations Tuesday mornings from September through April.



SUMMER READING PROGRAM

During the summer months, varied programs for younger readers are held to encourage and sustain lifelong reading habits.

NEWSPAPER ON MICROFILM / LOCAL HISTORY

PWRL owns a microfilm copy of all newspapers printed within the Library's direct service area. Patrons at branch locations may use the Library's equipment to view and print articles. Birth, Death, and Marriage Indexes for some newspapers are available to aid researchers.

COPIER & FAX MACHINE

Each PWRL location has a copier and a fax machine for the public's use.

COMPUTER, INTERNET, & WIRELESS ACCESS

Each PWRL location has at least one computer with Internet access, software, and printing capabilities available for the public's use. All locations now offer wireless Internet access during Library business hours for patrons who have their own equipment and wish to use PWRL's high speed Internet connection.

NCKL - NORTH CENTRAL KANSAS LIBRARY SYSTEM

PWRL contracts with NCKL to provide residents additional services. NCKL provides mail-a-book, rotating books, and talking books. Consulting and training for library staff is also offered. PT & WB County residents, under PWRL's contract, may use Manhattan Public Library, or any other NCKL library.

2008 STAFF AS OF DECEMBER 31, 2008

Director
Assistant Director
Secretary/Bookkeeper
Processing & Consultant
Processing Clerk
Special Projects - Temp
Special Projects - Temp
Special Projects - Temp
Special Projects - Temp

St. Marys Librarian
St. Marys Assistant
St. Marys Substitute
St. Marys Substitute
St. Marys Substitute

Alma Librarian
Alma Assistant
Alma Substitute
Alma Substitute

Eskridge Librarian
Eskridge Assistant
Eskridge Substitute
Eskridge Substitute

Onaga Librarian
Onaga Assistant
Onaga Substitute
Onaga Substitute

Mini Librarian
Harveyville Substitute
Harveyville Substitute

Mini Librarian
Alta Vista Substitute
Alta Vista Substitute
Olsburg Substitute
Westmoreland Substitute
Westmoreland Substitute

Judith Cremer
Maribeth Turner
Julie Homan
Deborah Eichem
Vicky Jones
Sharon Durkes
Debbie Hewes
Freda J. Dobbins
Marilyn Hund

Kathryn Barnes
Allison Bordelon
Theresa Heath
Peggy Verschelden
Sally Sharp

Iris Joyce Mathies
Julia Anderson
Carole Moege
Debra Jo Thierer

Norma Riepma-Langley
Jeannie Bennett
Teri Durkes
Mai Hannagan

Deborah Stallard-Parry
Emma Gilsdorf
Nellie Sumner
Joye Platt

Sally Sharp
Vicky Jones

Elizabeth Feiden
Doris McDuffett
Marilyn Ziegenhirt
Tammy Force
Patricia A. Krause
Mary Rosell



BOARD MEMBERS AS OF DECEMBER 31, 2008

Position 1	Becky Avery Olsburg, 66520	May 1, 2006 - April 30, 2010 Co-Secretary
Position 2	Susan Bozarth Eskridge, 66423	Aug. 1, 2006 - April 30, 2010 Co-Secretary
Position 3	Ruth Messer Alma, 66401	May 1, 2008 - April 30, 2012 Vice-Chairman
Position 4	Melanie Abitz Onaga, 66521	May 1, 2003 - April 30, 2011 Chairman
Position 5	Kim Wild Maple Hill, 66507	May 1, 2005 - April 30, 2009 Treasurer
Position 6	Maris "Tippi" Flerlage St. Marys, 66536	May 1, 2008 - April 30, 2012 Co-Secretary



EX-OFFICIO MEMBERS

Ervan Stuewe, Chairman
Wabaunsee County Commission
Alma, 66401

Corwin Seamans, Chairman
Pottawatomie County Commission
Westmoreland, 66549

PWRL's Board of Trustees is composed of eight members. The Pottawatomie & Wabaunsee County Commissions each appoint three members to serve on the Library Board, and the County Commission Chairman from each county is also an ex-officio voting member of the Board.

Library Board members can serve a maximum of two consecutive, four year, terms. The regular monthly meeting of the Library Board is held on the last Wednesday of each month at 5:30 at the St. Marys Library, unless otherwise ordered by the Board.



The READ Posters displayed throughout the annual report were created for the purpose of promoting the Library and literacy. These posters feature volunteers, staff, and board members.

FINANCIAL REPORT

REVENUES 2008

PT Co. Ad Valorem Taxes	\$ 329,858.00
WB Co. Ad Valorem Taxes	\$ 105,283.00
Grants	\$ 35,050.00
Donations and Memorials	\$ 8,278.00
CIF Income	\$ 5,627.00
SMSB CD (vehicle replacement)	\$ 371.00
Miscellaneous Revenues	<u>\$ 4,889.00</u>



TOTAL REVENUE

\$ 489,356.00

EXPENDITURES 2008

Personnel (Salaries & Benefits)	\$ 263,951.00
Capital Improvements	\$ 650.00
Library Materials	\$ 48,290.00
(Books, Audios, Magazines, etc.)	
(\$19,372 budgeted, additional expenditure from	
GF, State Aid, ILDP Grant, donations, misc. rev.)	
Operations	<u>\$ 170,478.00</u>
(Rent, utilities, supplies, equipment, etc.)	

TOTAL EXPENDITURES

\$ 483,369.00

PWRL LIBRARY MATERIALS

	2007	2008
Adult Books	48,387	49,539
Large Print	6,725	7,651
Mail A Book (NCKL)	3,432	3,325
Children's Books	44,430	46,044
Rotating Books (NCKL)	5,820	5,680
Audio Books	2,740	2,740
Videos	236	237
Newspaper Subscriptions	24	23
Magazine Subscriptions	127	106
Microfilm	443	443
Total Library Materials	<u><u>112,151</u></u>	<u><u>115,788</u></u>



TOTAL NUMBER OF ITEMS BORROWED

	2007	2008
Adult Books	31,028	33,052
Children's Books	33,098	37,816
Audio Books	2,081	2,279
Periodicals	2,241	1,980
Total Borrowed	<u><u>68,448</u></u>	<u><u>75,127</u></u>



OTHER STATISTICS

Total Registered Borrowers	6,847
Individual Public Computer Sessions	9,412
Reference Questions Answered	13,302
Patron Requests Handled	4,259
Patron Requests filled by other PWRL location	1,364
Interlibrary Loan Materials Loaned	636
Interlibrary Loan Materials Borrowed	862



TOTAL PATRON VISITS IN 2008

Location	Total Hours Open	Patron Visits
Alma	1,664	9,672
Eskridge	1,690	7,041
Onaga	1,742	5,918
St. Marys	2,574	22,776
Alta Vista	416	406
Harveyville	390	905
Olsburg	364	1,040
Westmoreland	390	811
Total	<u><u>9,230</u></u>	<u><u>48,473</u></u>



6510 children attended **266** special programs at all locations of the library in 2008. **503** children read **8,655** books during the eight week "Catch the Reading Bug" summer reading program. **376** adults attended **17** special programs at the library.

	POTTAWATOMIE WABAUNSEE REGIONAL LIBRARY <small>Providing Library Services to the Residents of Pottawatomie & Wabaunsee Counties Since 1962</small>
Pay to the	\$2,121,989.00
ORDER of Residents of Pottawatomie and Wabaunsee Counties	
Two million, one hundred twenty one thousand, nine hundred eighty nine no/100 DOLLARS	
Patrons used 33,052 adult books - estimated consumer cost if individually purchased \$826,300 37,816 children's books - estimated consumer cost if individually purchased \$945,400 2,279 audio books - estimated consumer cost if individually purchased \$56,975 1,498 interlibrary loan items - estimated consumer cost if individually purchased \$37,450 1,980 magazines - estimated consumer cost if individually purchased \$9,900 9,412 hours of computer time - estimated consumer cost if individually purchased \$112,944 Patrons Asked..... 13,302 reference questions - estimated consumer value \$133,020	
For <u>Return on Investment - Materials & Services - 2008</u> _____, Director	
Library Expenditures in 2008 = \$483,369 Value of Materials & Services to Community = \$2,121,989	
Based on Estimated Retail Costs: Materials Borrowed (Books, Audios, ILL) = \$25.00 Magazines Borrowed = \$5.00 Hours of Computer Time Used = \$12.00 Reference Questions Asked = \$10.00	